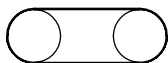
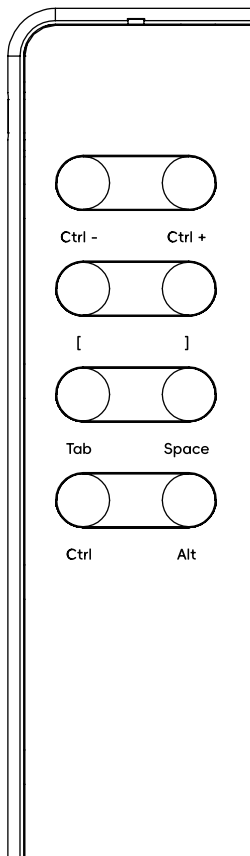


P5 Graphic Tablet User Guide



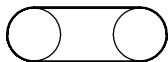
Ctrl -

Ctrl +



[

]



Tab

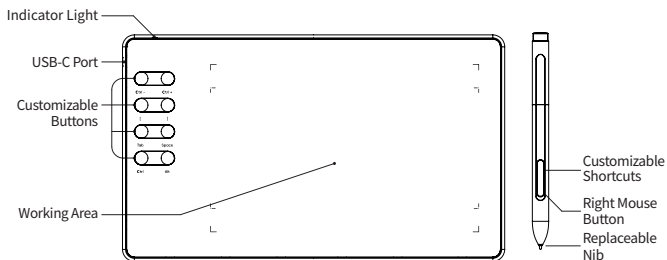
Space



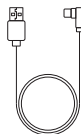
Ctrl

Alt

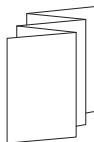
Product Overview



Pen



Data Cable



Quick Guide



OTG Adapter



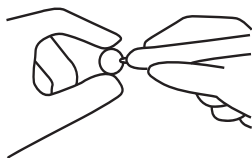
Nib Clip



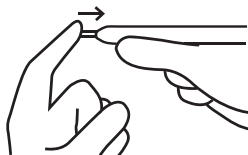
Nib

*The list is for reference only. Please refer to the actual product received.

Change Pen Nib



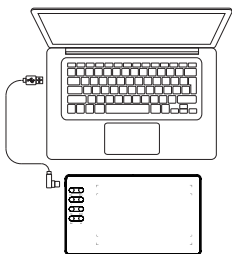
1. Pinch Out



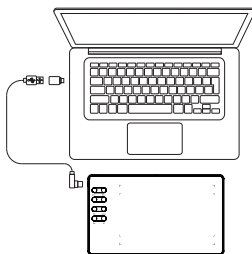
2. Push In

Connection

PC



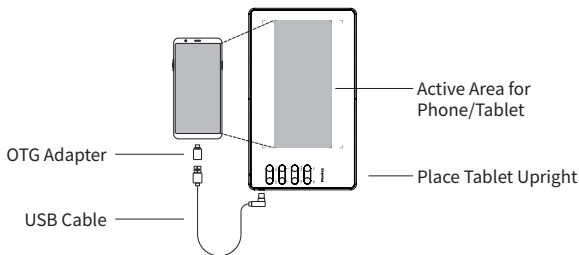
Via USB Cable



Via USB Cable + OTG Adapter

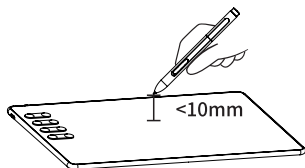
- Connect tablet to PC via USB cable (Use OTG Adapter if the PC only has USB-C port) ;
- Indicator would flash if the tablet is successfully connected;
- Please install the appropriate driver before use.

Android Devices

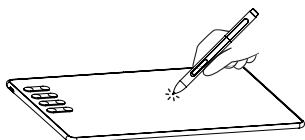


- Connect to your Android device via OTG Adapter + USB Cable;
- Make sure **OTG Connection is supported and turned on in settings**;
- **Disable Auto-Rotate and keep the device in Portrait Mode**;
- Indicator would flash if the tablet is successfully connected;
- Move the EMR Pen in active area to control the cursor.

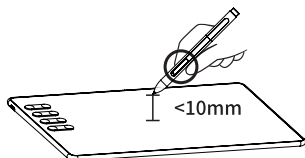
How To Use



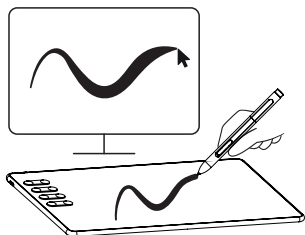
Move the pen slightly above the active area (<10mm) without touching the surface, to control the position of the cursor.



Tap with pen tip = Mouse Left Click
Tap with pen tip x2 = Double-Click



To use the pen buttons, hold the pen slightly above the active area within 10mm, then click the button.



Draw lines with changing thickness according to the force being applied to the pen (only available in softwares that support pressure sensitivity).

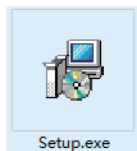
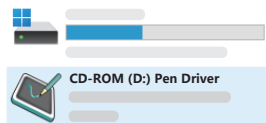
Driver Installation

Windows (Windows 7 or later)

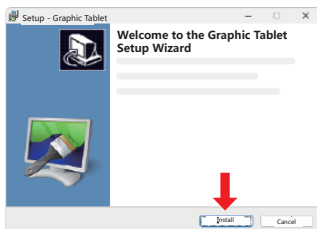
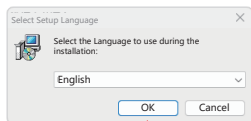
1. After connection, find and run the “Setup.exe” at following location;

This PC > CD-Rom: Pen Driver > Driver for Windows > Setup.exe

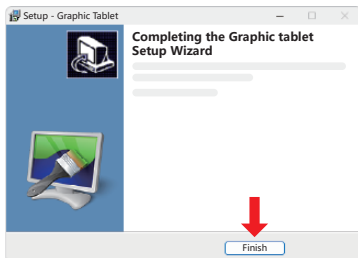
▼ Devices and drives



2. Select language and click “Install”;



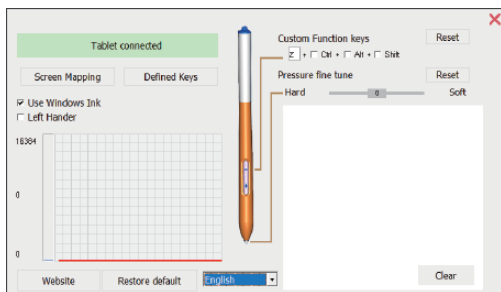
3. Click “Complete” when the installation is finished;



4. Open “Graphic Tablet” to change settings of the tablet. When the driver is running, a pen icon will appear in taskbar.



Graphic Tablet



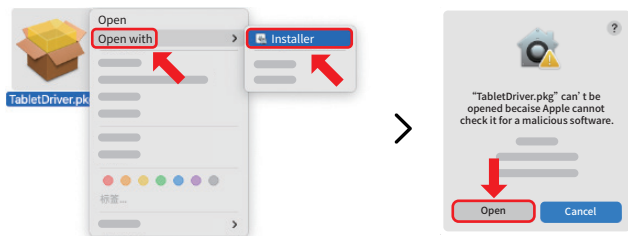
🍏 macOS (macOS 11.0 or later)

1. After connection, find and run “TabletDriver.pkg” at following location;

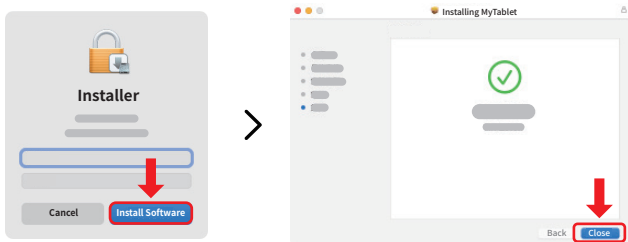
Finder > Pen Driver > Driver for macOS > Mac_tablet_driver.dmg > TabletDriver.pkg



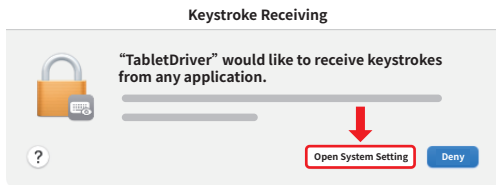
2. **Right Click** “TabletDriver.pkg” - Open with - Installer, click “Open”;



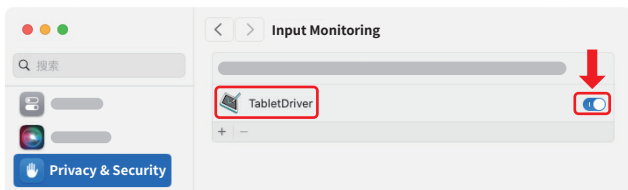
3. Click “Continue” - “Install”, enter the password and click “Install”;



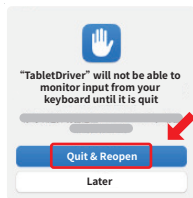
4. Click “Open System Settings” in the Keystroke Receiving pop-up;



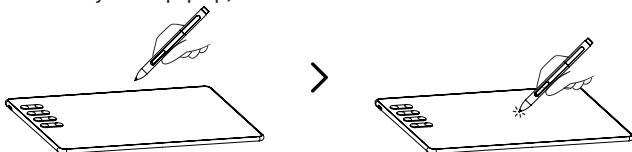
5. Turn on “TabletDriver” in **Privacy & Security - Input Monitoring**;



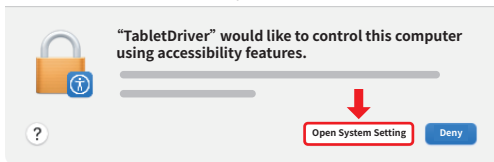
6. Click “Quit & Reopen” in the pop-up;



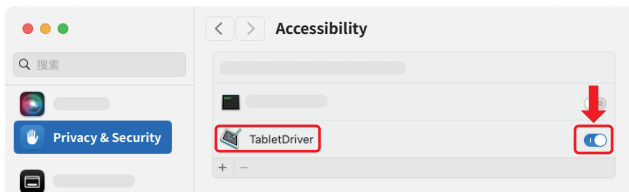
7. Touch tablet with the pen tip, and click “Open System Settings” in the Accessibility Access pop-up;



Accessibility Access (Events)



8. Turn on "TabletDriver" in **Privacy & Security - Accessibility**;



9. Tablet settings can be found at status bar on top-right of the screen.



TabletDriver

