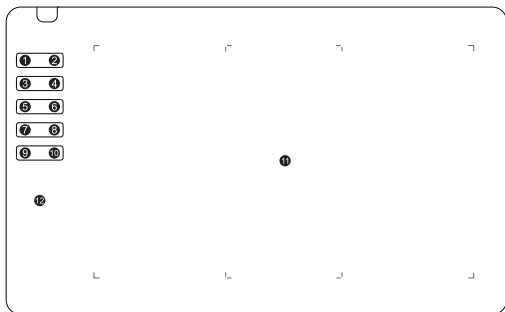


T906 Graphic Tablet

USER GUIDE

Quick Installation

Preview



- | | | | |
|--------|--------|-----------------|------------|
| 1 E | 2 B | 3 Ctrl + - | 4 Ctrl + + |
| 5 [| 6] | 7 Tab | 8 Space |
| 9 Ctrl | 10 Alt | 11 Drawing Area | 12 Logo |

Note:

1. The cursor will be static when the pen is not in the drawing area of the tablet, when the pen is in contact with the tablet, the cursor will move along with the pen.
2. 1—10 key bindings can be customized.

Battery-free EMR Pen

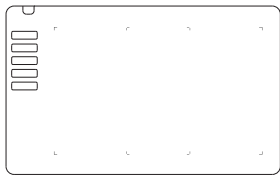


- | | | |
|---------|-----------------------|------------|
| 13 Undo | 14 Mouse Right Button | 15 Pen Nib |
|---------|-----------------------|------------|

Note:

1. Key of "-" can be customized in the Tablet Driver interface
2. The Battery-free EMR Pen no need to charge or replace battery

Packing List



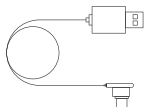
Graphic Tablet



Battery-free
EMR Pen



Nibs*8



USB-A to USB-C Cable



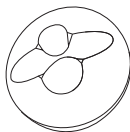
User Guide



USB-C
OTG Adapter



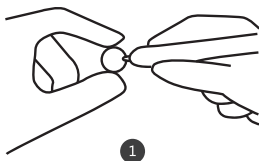
Nib Tweezer



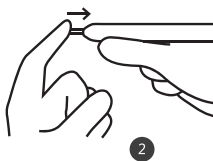
Pen Holder

Replace the Nibs

Pull out

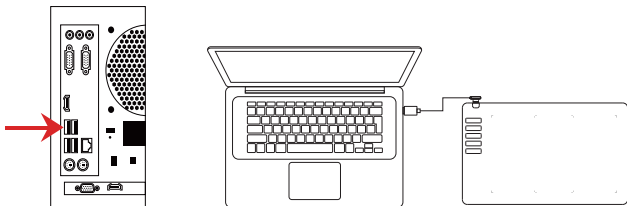


Push in



Connect to PC/Laptop

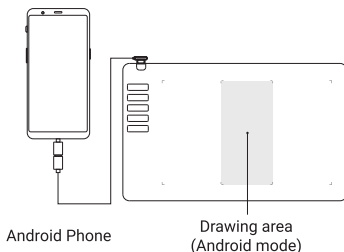
Please connect the graphic tablet to the USB port of PC/Laptop with USB Cable



① Connect to USB port of PC

② Connect to USB port of laptop

Connect to Android Phone



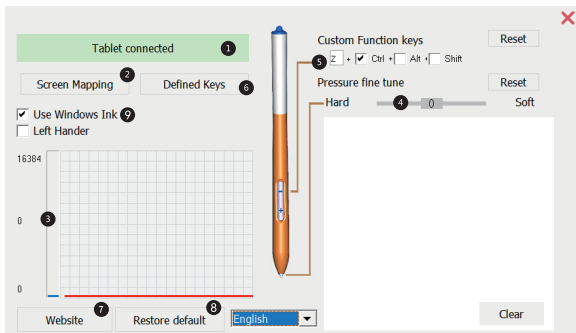
Steps:

1. Connect OTG cable/OTG adapter to Android phone
2. Connect USB cable to OTG cable/OTG adapter
3. Connect the USB cable to graphic tablet
4. Go to Settings in Android Phone, **turn on the "OTG" function**

Note:

Please keep Portrait Orientation Lock: On when using graphic tablet on your Android device.

Driver settings



- ① Graphic tablet connection status
- ② Adjust the mapping between the screen and the working area of graphic tablet
- ③ 0 to 16384 pressure levels, the graph shows the realtime pressure level the pen detects
- ④ Allow users to change the pressure sensitivity of the pen, by default it's 0
- ⑤ "-" key on the pen is customizable, by default it's Ctrl+Z, "+" key is binded to Right button of the mouse
- ⑥ You can customize your keys here.
- ⑦ Our official website.
- ⑧ Restore driver to default setting
- ⑨ Turn on / off Windows ink

Specification

Product Model	T906
Product Size	327 x 200 x 5mm
Active Area	250 x 156mm
Pressure Level	16384
Sample Rate	330PPS
Resolution	5080LPI
Active Height	15mm
Physical Buttons	10 Keys (Not supported on Android)

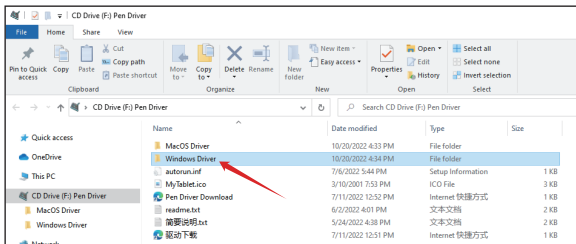


OFFICIAL WEBSITE

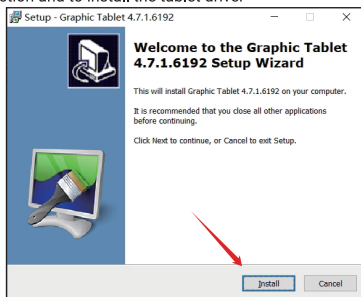
<http://www.ping-it.cn/t906/>

Driver Installation on Windows

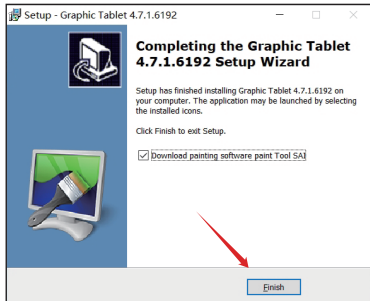
1. After connecting the tablet to your PC, go to "This PC" and find "CD Drive: Pen Driver". Open "Windows Driver" folder and run "Tablet_Setup.exe"



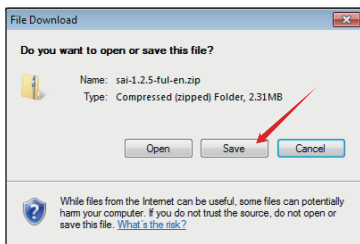
2. Follow the instruction and to install the tablet driver



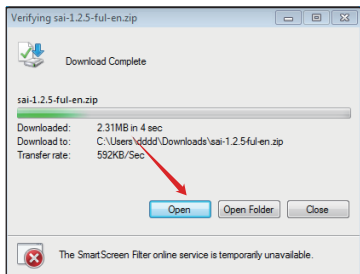
3. At the last page, select "Download painting software: Paint Tool SAI" if you need, and click "Finish"



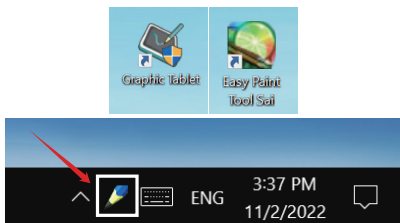
4. Select the Download Path and click “Save”



5. When the download is completed, run “sai.exe” then follow the instruction to install



6. If the following icons appear on the desktop, the driver installation is completed.

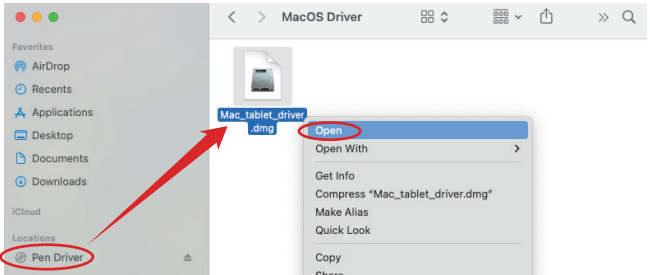


Note:

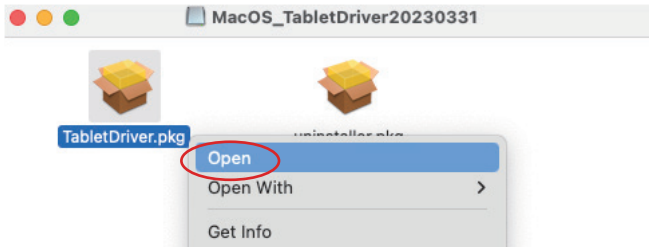
1. Please use the official USB cable
2. Avoid dropping the battery-free EMR pen
3. Do not connect more than one graphic tablet to your computer, it may cause the mouse cursor to malfunction

Driver Installation on macOS

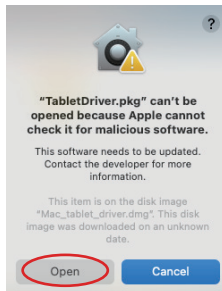
① After connecting the graphic tablet, go to "Finder" Open "Pen Driver", Right click and open "Mac_tablet_driver.dmg"



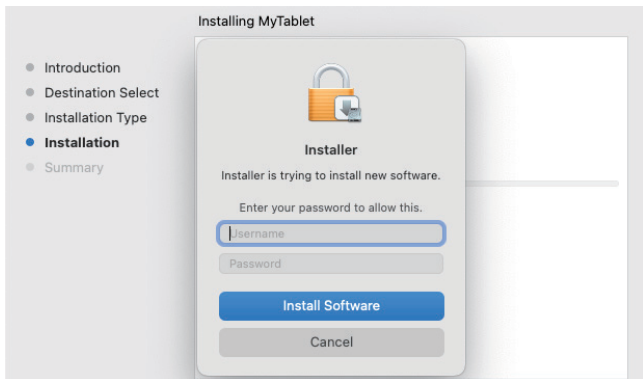
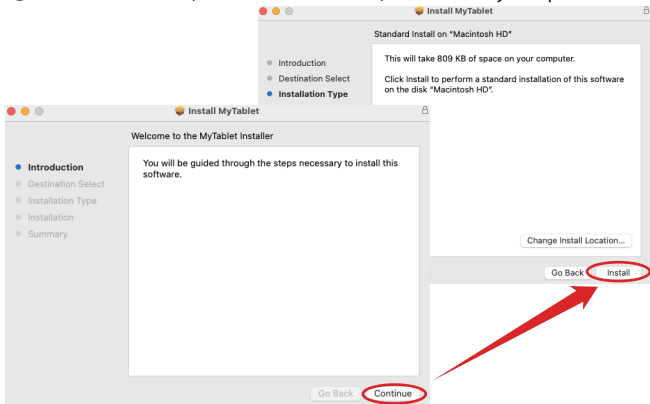
② Right click and open "TabletDriver.pkg"



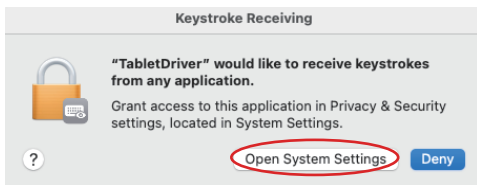
③ Click "Open" in the pop-out window



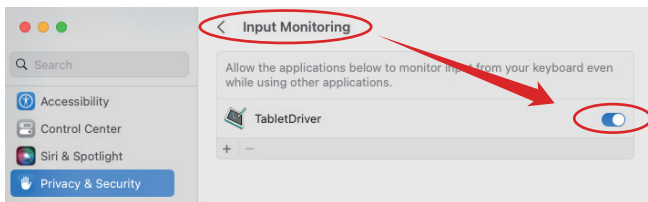
④ Click "Continue", then click "Install", and enter your password



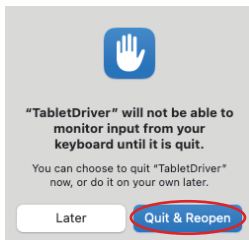
⑤ Complete the installation, there will be a pop-up window Click "Open System Settings" to go to "Input Monitoring"



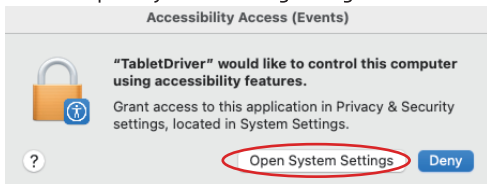
⑥ Authorize "TabletDriver" at "Input Monitoring"



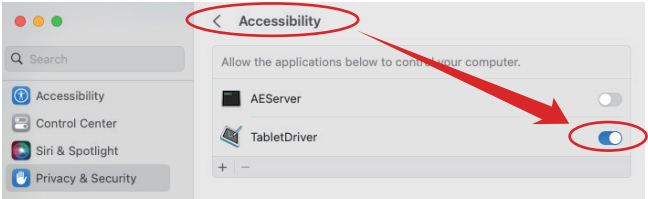
⑦ Click "Quit & Reopen"



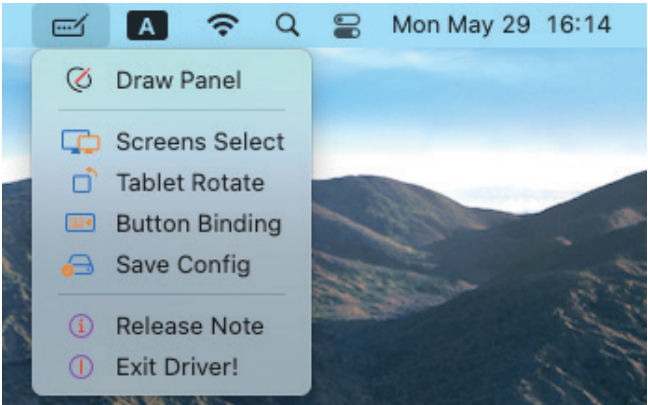
⑧ Hold the tablet pen on the tablet, there will be a pop-up window. Click "Open System Settings" to go to "Accessibility"



⑨ Authorize "TabletDriver" at "Accessibility"



⑩ There will be a tablet icon on the status bar, settings of the tablet can be accessed here



Note:

If you encounter the "Malicious Software" pop-up window, pls **right click and open**, then there will be an extra option for you to open the driver files.